

eNBioAccess-T9

FACE & FINGERPRINT
ACCESS CONTROL TERMINAL





SECURITY REINFORCEMENTS IMPROVED BY MULTIMODAL BIOMETRICS

Face & Fingerprint



NITGEN



ZKSoftware

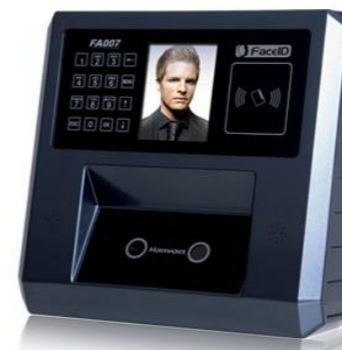
Only Face



Suprema



MorphoTrust USA



Hanvon



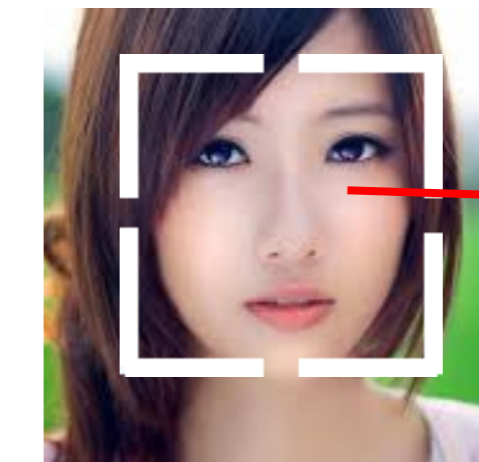
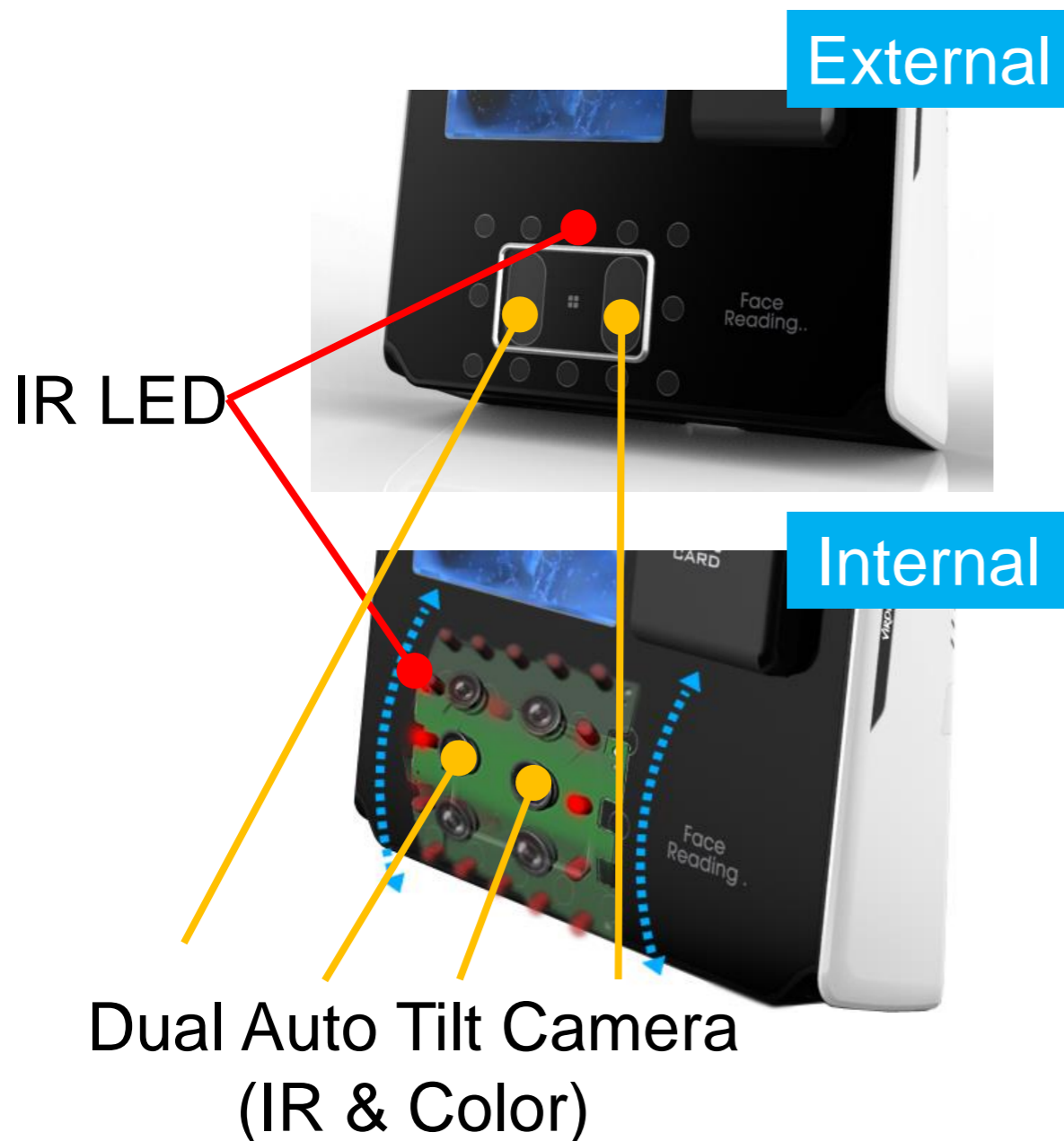
Anviz





HIGH QUALITY DUAL CAMERA

Auto Face Detection to 3 meters



Face
Detection
Using Normal image

FACE Detection



Feature
Extraction
Using IR image

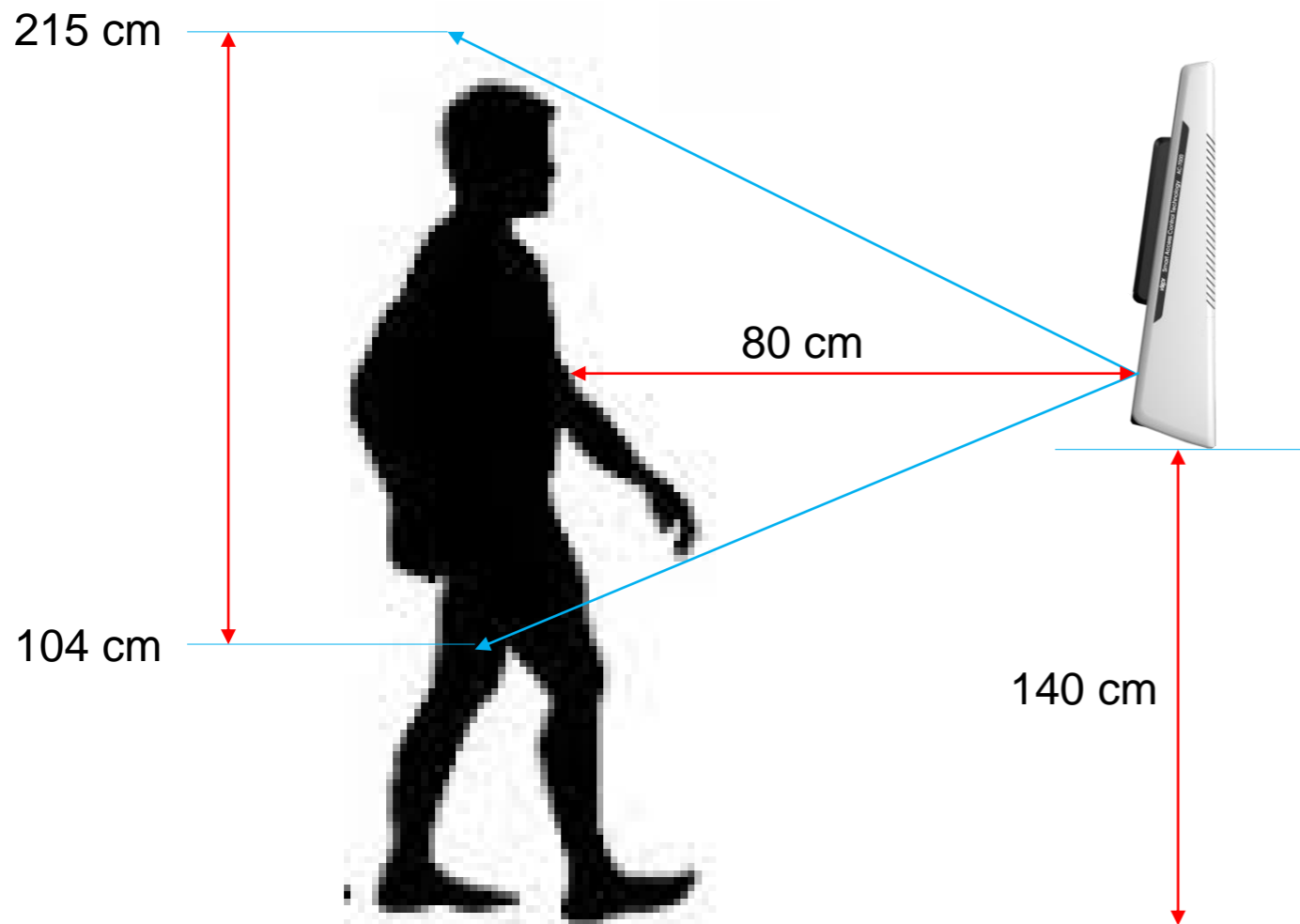
FACE Recognition





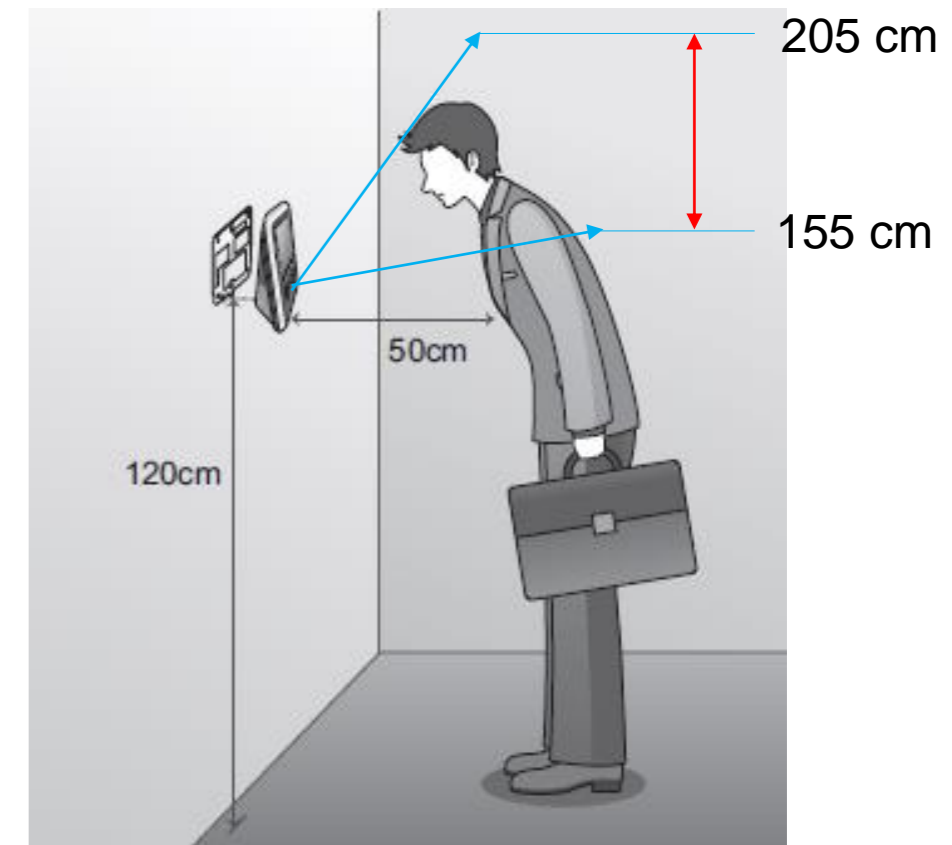
FACE RECOGNITION USING AUTO TILT CAMERA

Expansion of face recognition range per user's height
No need to bend your back and knees



VS

< FaceStation >





0.8 INCH WIDE ACTIVE IMAGE AREA FOR FINGERPRINT FOR ENHANCED AUTHENTICATE RATE

FBI PIV Certified Fingerprint Sensor Module



Item	Specification
Sensor type	Optical sensor
platen area	21 mm(W) × 21 mm(H)
Effective capture area	20.3 mm (W) × 20.3 mm(H)
Image pixels	400 x 400 pixels
Resolution	500 dpi ±1%
Special function	Live and Fake fingerprint detection





LIVE AND FAKE FINGER DETECTION





HIGH PERFORMANCE FACE & FINGERPRINT TERMINAL

▪ High-Performance Face Recognition

- 1:2,000 authentication in less than 1 second, 1 : N is 10,000 faces (subject to change)

▪ 5" Touch LCD Screen

- Electrostatic capacity LCD enhanced touch sensitivity and improved user convenience.

▪ Large Capacity Memory

- Face Capacity : 10,000 faces (subject to change)
- Fingerprint Capacity : 250,000 fingers

▪ External Micro SD card

- User info and log data backup and upload





HIGH PERFORMANCE FACE & FINGERPRINT TERMINAL

▪ Enhanced Card Option

- Dual card support (RF EM125kHz, Mifare 13.56mHz), HID iClass and HID Prox support

▪ External SD Card Support

- Export & Import data, upgrading the firmware.

▪ Android OS Support

- Easy to develop various applications



SPECIFICATION

BIOMETRIC
ACCESS &
TIME ATTENDANCE



Item	Specification
CPU	1GHz Quad Core
LCD	5.0 inch Touchpad LCD(480*800)
Camera	Tilted Dual Camera (Color & IR)
Flash / RAM	Flash 4G + MicroSD 8G Bytes / 2GBytes
User Capacity	250,000 User / 250,000 Card / 250,000 Finger (1:25,000) 10,000 Face (1:2,000 Template) 10,000,000 Log / 20,000 Image Log
Voice / Beep	Sounds volume control, Supports multiple languages
Fingerprint Module	FAS04 (20*20 mm / 400*400 pixel / 500DPI) - PIV certificated fingerprint sensor
Card Reader Option	125KHz RF / 13.56MHz Smart Card(1 Sam Socket) HID 125K Prox card (Option) / HID iClass Card (Option)
External SD Card supported	Data Backup / FW Upgrade
Luminance Sensor	If illumination is low, image log is saved as identifiable IR image.
Communication Interface	TCP/IP(10/100M), RS-485, RS-232, Wiegand In & Out Wireless LAN(USB type, Optional)
Server Coupling	O (with the Unis Server)
Tamper	Case Open & Removal from the wall detection
Lock Control	EM, Strike, Motor Lock, Auto Door
I/O	4 In(1 Exit, 3 Monitor), 2 Out (Combination with Lock Control)
Operation System	Android

LIVE & FAKE FINGERPRINT DETECTION TECHNOLOGY

